



Ankli Metallbau AG

“Projects and drawings are becoming increasingly complex, making the use of 3D technologies essential for us.”

Why did we choose HiCAD?

“The answer to this question is quite simple: the industry-specific solutions have given us the certainty that we can cover the entire business area, steel construction, metal engineering, sheet metal fabrication and glass construction with HiCAD. HiCAD is the right solution and the right tool for our industry. We see HiCAD as an extremely powerful tool for the metal construction industry.” Ankli Metallbau AG from Erschwil,

Switzerland, is a family business that can look back on 165 years of experience in the metal engineering industry. The company specialises in steel and metal engineering, sheet metal processing, steel parts for timber construction, letterboxes and glass construction. The team of about 30 people, from planning engineers to trained metal engineers, is experienced in in the planning and implementation of projects with a



REFERENCE REPORT

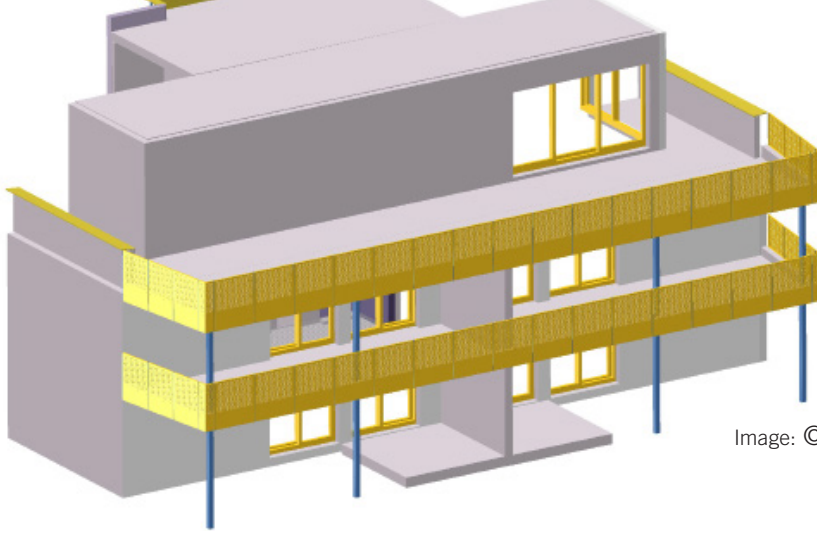


Image: ©Ankli Metallbau

high degree of in-house production.

The company philosophy is based on flexibility, reliability, trust and quality. Ankli Metall engineering AG attaches great importance to modernising its infrastructure, which is why Kilian Ankli, engineer and member of the management team, set out on a journey to implement a suitable 3D CAD solution for the company.

Initial situation:

“In our industry, we are faced with constantly growing challenges. Projects and drawings are becoming increasingly complex, making the use of 3D technologies essential for us. The dynamic nature of metal construction often brings with it unforeseen changes that can lead to errors and therefore require careful planning. Before deciding to switch to a 3D CAD system, we spoke intensively with colleagues in the industry and benefited from their experience. The name “HiCAD”, a CAD system by the ISD Software und Systeme AG in Solothurn quickly caught our attention and was recommended to us as a promising solution that we should take a closer look at,” Kilian Ankli tells us. Although the first contact with HiCAD was several years ago, it was not yet an option for Ankli Metall Engineering AG to switch. However, with the growth of the company and the changing requirements for CAD systems, this perspective has changed.

Kilian Ankli explains: “I had previously worked with Inventor, a parametric CAD system that I was familiar with from my previous job. However, I quickly realised that this way of working was not efficient enough for metal engineering. The variety of projects and the constant changes showed me the limits of my previous way of working. The switch to HiCAD marks an important step for us in optimising our work process and meeting the requirements of modern metal construction.”

Requirements:

“When looking for a suitable a CAD solution, our focus was on finding a solution that not only offered industry-specific functions, but also the flexibility to parameterise standard products such as letterboxes and frames, as well as to efficiently develop individual projects in the field of steel and metal engineering. This versatility is crucial, as customised projects make up a significant part of our day-to-day business.”

HiCAD's advantages:

“In order to realise our projects efficiently, we rely on a range of automated features that make our work much easier. The automatic drawing derivation, sheet development and the staircase and railing configurator are of crucial importance here. In addition, the output of



“We can concentrate fully on the technical solution and have the correct dimensions available at all times without having to travel to the site several times and carry out measurements with several employees.”

Kilian Ankli, Engineer & Member of the Management Board, Ankli Metallbau AG

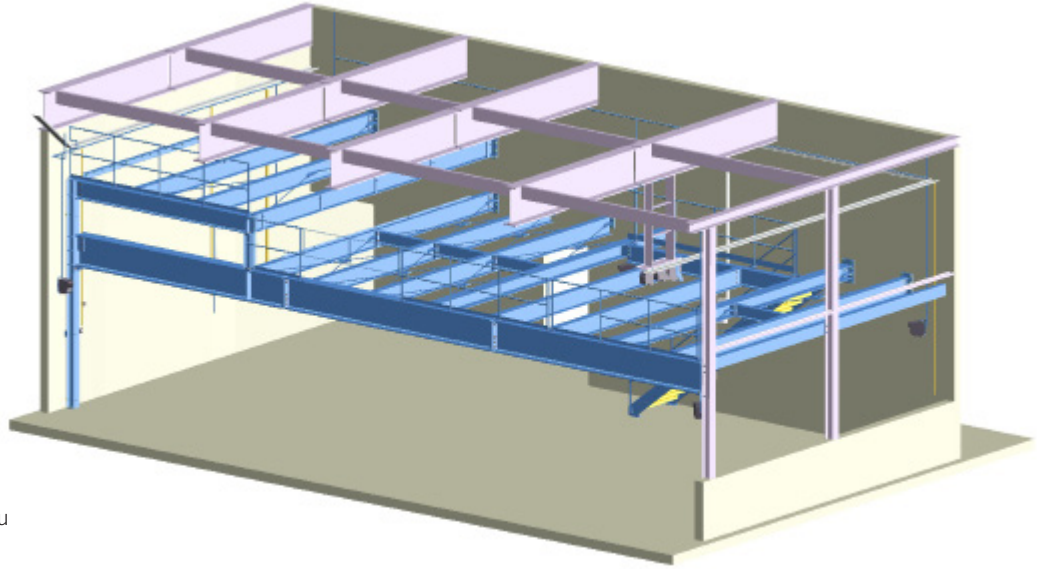


Image: ©Ankli Metallbau

complete bills of materials with material specifications offers a significant advantage, as it reduces manual and error-prone tasks that previously had to be carried out in 2D.

A decisive reason for our decision in favour of HiCAD is the combination of two working methods, the “parametric” and the “free” approach, which are implemented excellently. This allows us to parameterise our standard products and at the same time realise individual metal engineering projects quickly and efficiently without having to rely on parametrics. This allows us to maintain our flexibility and not to adapt to the limitations of the CAD solution. The seamless integration of 2D and 3D data is also particularly noteworthy, which is especially helpful when many changes need to be made and fast work is required, as is common in facade construction.

This opens up new possibilities, especially in glass construction, and we always have an overview of the drawing. Visualisation in 3D is an excellent tool for convincing customers. Private customers in particular now have the opportunity to better understand a technical drawing. In this way, we can get orders more quickly, as communication is clear from the outset. Taking measurements is often a tedious task in everyday life, but the use of

a laser scanner can simplify this process considerably. This method offers significant advantages, especially for conversions or extensions, as all the required dimensions can be recorded in a point cloud. We work together with a regional partner who carries out the scans and processes the point cloud. The ability to work directly in the point cloud in HiCAD is an advantage and makes our work much easier. We can concentrate fully on the technical solution and have the right measurements available at all times without having to travel to the site several times and carry out measurements with several employees.

In terms of BIM, we are well positioned for the future, as we can ensure the exchange via IFC with HiCAD. Although most architects still supply 2D DWG data, this is likely to change in the coming years, and we are prepared for it.“

A decision in favour of innovation:

“After an in-depth presentation and an extensive test run with our data, we decided at the end of 2022 to switch to the advanced 3D CAD solution HiCAD. By doing this, we not only introduced a new technology, but also experienced remarkable acceptance from our employees. The training provided by the ISD proved to be extremely



“The switch to HiCAD marks an important step for us in optimising our work process and meeting the requirements of modern metal construction.”

Kilian Ankli, Engineer & Member of the Management Board, Ankli Metallbau AG

effective. Right from the start, the many possibilities of the software were clearly explained to us and working in the third dimension was taught in a practical way. The switching to HiCAD was, of course, easier for employees who already had existing 3D CAD experience. Nevertheless, even colleagues with no prior knowledge of 3D were able to quickly understand the new way of working and successfully integrate it into their daily routine. The collaboration with the ISD was extremely co-operative and pleasant right from the start. We greatly appreciate the regular dialogue with the ISD and the enquiries about how the changeover is working in practice. We are still convinced that we have taken an important step towards a successful future with our decision in favour of HiCAD. We would urge everyone in the metal construction industry to explore the possibilities of 3D and HiCAD.”

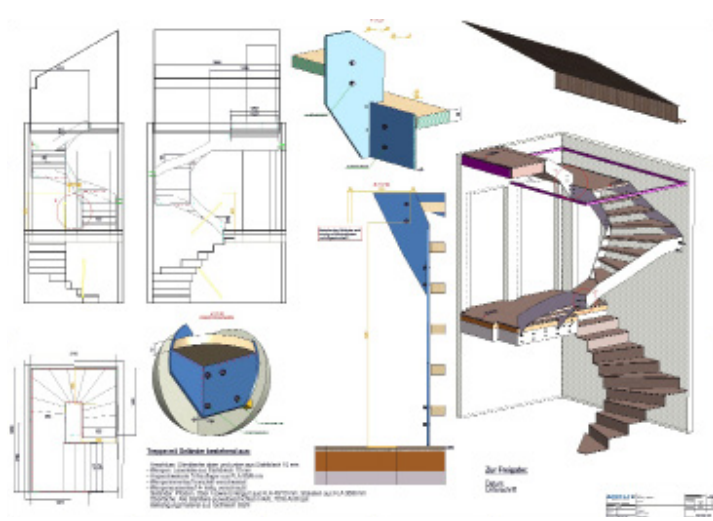


Image: ©Ankli Metallbau

Brief company profile:

- > Ankli Metallbau AG
- > Industry: Steel/Metal engineering, sheet metal and glass
- > Software: HiCAD
- > www.ankli-metallbau.ch



Success needs a strong partner!

Take a look at our solutions. We would be happy to show you further advantages during a personal presentation or a free consultation. Simply get in touch with us - we will be there for you.

ISD Software und Systeme GmbH

Tel.: +49-(0)231-9793-0

Mail: info@isdgroup.com

Web: www.isdgroup.com